

prevage™ MD

anti-aging treatment

PREVAGE™ MD Anti-aging treatment Patient Instructions

Precautions

Skin reactions have been reported following the use of PREVAGE™ MD anti-aging treatment. The rate at which these reactions have been reported to occur is low and most of the reactions are mild and self-limited by stopping the product. Additionally there have been rare reports of rashes away from the site of application, swelling, and allergic responses. Skin reactions to PREVAGE™ MD may be more likely to occur within the first several days of using the product, as well as in individuals with sensitive skin, eczema, or allergies to cosmetics or jewelry, and in individuals using PREVAGE™ MD anti-aging treatment in combination with other skin care products or undergoing medical procedures such as laser resurfacing, dermabrasion, chemical peels, or any other aggressive skin therapies. If any itching, burning, redness, or swelling occurs during the use of PREVAGE™ MD, wash the product off and discontinue use. Contact your dispensing physician to discuss your reaction.

Usage Instructions

Test usage of PREVAGE™ MD

Skin reactions to PREVAGE™ MD anti-aging treatment may be more likely to occur within the first several days of using the product. For this reason, before beginning to use PREVAGE™ MD on a regular basis, apply a small amount of product (less than one pump) daily for several days to a small area of skin in the area you plan to use the product. If any itching, burning, redness, or swelling occurs during this trial period, wash the product off and discontinue use. Contact your dispensing physician to discuss your reaction and to receive a refund. If no reactions occur, follow the instructions below.

Regular usage of PREVAGE™ MD

If you have normal skin sensitivity, after following the “Test usage of PREVAGE™ MD” instructions and if no reactions are seen, begin using PREVAGE™ MD anti-aging treatment once a day for the first week and, if tolerated, twice a day from then on. If any itching, burning, redness, or swelling occurs at any time while using the product, wash the product off, discontinue use, and consult your dispensing physician as needed.

Special Instructions

For people with sensitive skin:

Skin reactions to PREVAGE™ MD anti-aging treatment may be more common in individuals who have a history of sensitive skin, eczema, or allergies to cosmetics or jewelry. If you have sensitive skin, eczema, or a history of allergies to cosmetics or jewelry, begin using PREVAGE™ MD gradually.

For use in combination with other products:

Skin reactions to PREVAGE™ MD anti-aging treatment may be more common in individuals who are using multiple skin care products. If you are currently on an aggressive skin care regimen, your skin may become more sensitive to PREVAGE™ MD.

For use with other medical procedures:

Skin reactions to PREVAGE™ MD anti-aging treatment may be more common in individuals who have recently had certain medical skin care procedures. If you have recently undergone laser resurfacing, dermabrasion, medium to deep chemical peels, or any other aggressive skin therapies, you should wait 7 to 10 days before starting to use PREVAGE™ MD.

It is important that you first perform the "Test usage of PREVAGE™ MD" instructions as outlined above. If you do not experience a reaction following this test, begin using PREVAGE™ MD once every other day for the first week of use. During this time, if you experience any itching, burning, redness, or swelling, wash the product off, discontinue use, and consult your physician. If you do not experience any skin reactions during this one-week period, increase product usage to once a day for the next week and to twice a day the following week.

PREVAGE™ MD Ingredients**Contains**

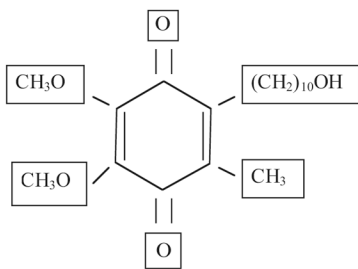
1% Idebenone (Hydroxydecyl Ubiquinone)

Ingredients

WATER (AQUA), CYCLOPENTASILOXANE, DIMETHICONE/VINYL DIMETHICONE CROSSPOLYMER, PENTYLENE GLYCOL, PEG-8, GLYCERIN, PHOSPHOLIPIDS, ISOPROPYL LAUROYL SARCOSINATE, PHENOXYETHANOL, ALGAE EXTRACT, AMMONIUM ACRYLOYLDIMETHYL TAURATE/VP COPOLYMER, HYDROXYDECYL UBIQUINONE, CAMELLIA SINENSIS LEAF EXTRACT, SODIUM HYALURONATE, PPG-2 ISOCETETH-20 ACETATE, PROPYLENE GLYCOL, SODIUM PCA, TREHALOSE, UREA, POLYPHOSPHORYLCHOLINE GLYCOL ACRYLATE, DEOXYARBUTIN, AMMONIUM ACRYLOYLDIMETHYLTAURATE/BEHENETH-25 METHACRYLATE CROSSPOLYMER, CAPRYLYL/CAPRYL GLUCOSIDE, SODIUM ACRYLATE/ACRYLOYLDIMETHYL TAURATE COPOLYMER, POLYQUATERNIUM-51, POLYISOBUTENE, BUTYLENE GLYCOL, SODIUM HYDROXIDE, DIMETHYLMETHOXY CHROMANOL, MICA, BENZOIC ACID, METHYLPARABEN, PROPYLPARABEN, SORBIC ACID, CHLORPHENESIN, RED 4 (CI 14700), TITANIUM DIOXIDE (CI 77891).

About Idebenone

Idebenone (6-(10-hydroxydecyl)2,3-dimethoxy-5-methyl-1,4-benzoquinone) is a synthetic analog of naturally occurring co-enzyme Q10 (ubiquinone) with the following chemical structure and molecular weight:



MW = 338.45

Idebenone is not a new compound; however, its use in topical skin care products is novel.

ALLERGAN
DERMATOLOGY

©2005 Allergan, Inc., Irvine, CA 92612

™Marks owned by Allergan, Inc.

May 2005

Re-order: SIMC051028 0501483